



# ANNEXATION UPDATE

NOVEMBER 2018

# HISTORY

## TAKE 1:

- BEGAN ANNEXATION APPLICATION PROCESS IN 2010
- DISPUTES OVER BOUNDARIES, OPEN SPACE, SCSD OVERLAP

## TAKE 2:

- REINITIATED PROCESS IN AUG 2015
- SUBMITTED LAFCO APPLICATION IN APRIL 2018
- MCWD WAS SUED; PARTIES SETTLED IN SEPT 2018

## **NEXT STEPS**

- UPDATING APPLICATION FOR RECIRCULATION
- CONTINUE EFFORTS WITH SCSD
- TARGETING LAFCO PUBLIC HEARING IN JANUARY 2019
  - PUBLIC HEARING STEPS (3 MONTHS)
  - POST PUBLIC HEARING STEPS (3 MONTHS)

**TARGET ANNEXATION COMPLETE: JULY 2019**

# ANNEXATION SUMMARY

- ANNEX THE CURRENTLY SERVED AREAS ON THE FORMER FORT ORD (THOSE THAT HAVE LAND USE APPROVALS)
- ANNEX A SMALL AREA CONTAINING A SCHOOL AND A CHURCH THAT PRESENTLY RECEIVE WATER FROM MCWD AND ARE WITHIN MCWD'S CENTRAL MARINA AREA
- ALL FUTURE ANNEXATIONS (NOT IN THIS APPLICATION) TO BE DONE AS PART OF LAND USE APPROVALS (IDENTIFIED AS FUTURE STUDY AREAS ON ANNEXATION MAP)

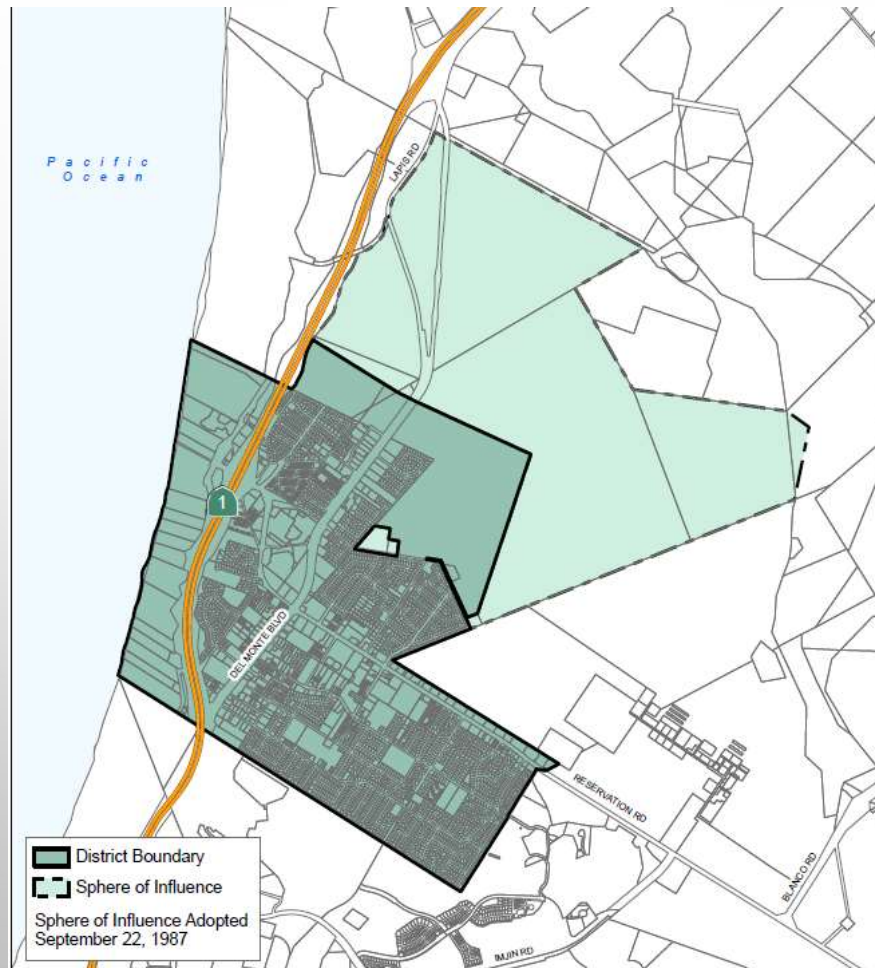
# ANNEXATION SUMMARY

- AREAS INCLUDED ALREADY SERVED BY MCWD, THEREFORE NO SERVICE EXTENSION OR DEVELOPMENT IS PROPOSED; NO CHANGE TO WATER/WASTEWATER SERVICE
- DISTRICT CURRENTLY PROVIDES SERVICE TO THESE AREAS AS OUTLINED IN THE 1998 WATER/WASTEWATER AGREEMENT BETWEEN FORA AND MCWD; **AND**
- AS FURTHER DESCRIBED IN THE 2001 QUITCLAIM DEED FOR WATER AND WASTEWATER SYSTEMS BETWEEN FORA AND MCWD

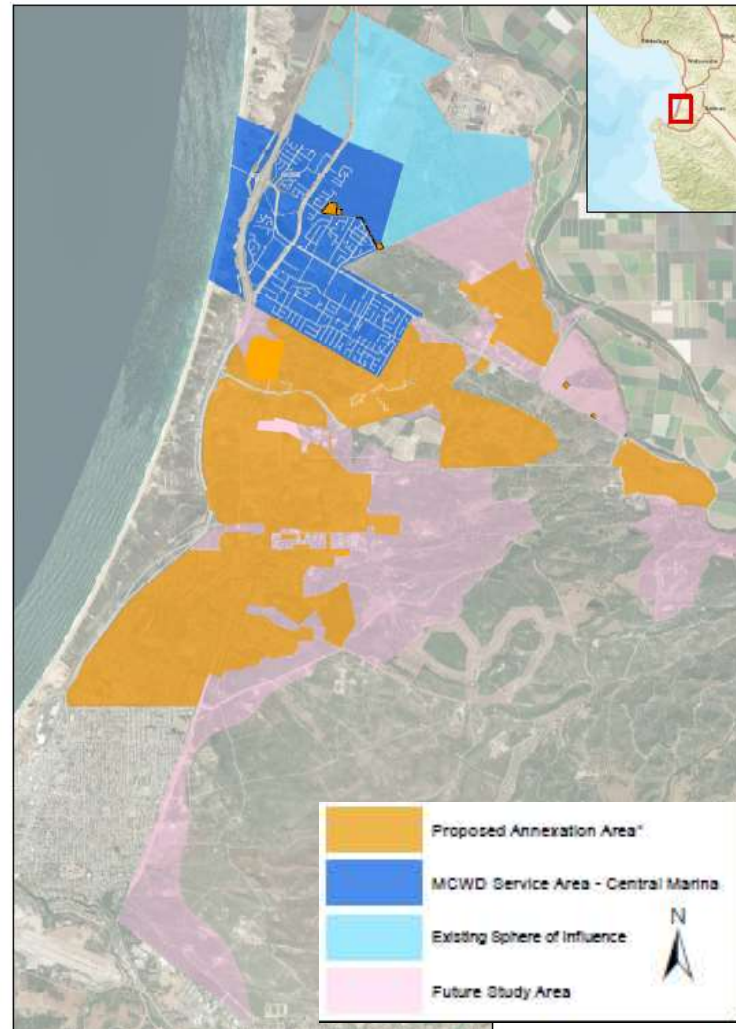
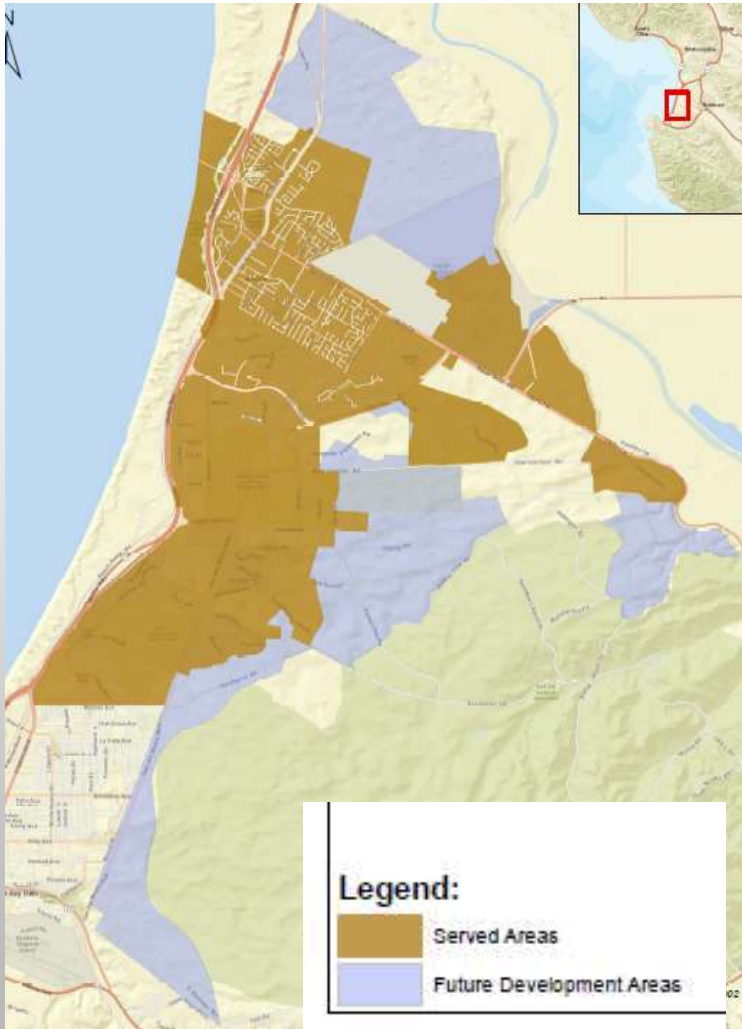
## **RESULT**

- MCWD'S EXISTING SERVICE AREA AND SPHERE OF INFLUENCE (SOI) OF 3,116 ACRES INCREASED BY 5,347 ACRES (NEW TOTAL 8,463 ACRES)
- CUSTOMERS THAT ARE REGISTERED TO VOTE WITHIN THE MCWD BOUNDARY WILL HAVE ABILITY TO VOTE FOR AND RUN FOR OFFICE ON THE MCWD BOARD OF DIRECTORS

# EXISTING MCWD BOUNDARY



# ANNEXATION MAP (PRE AND POST SETTLEMENT)





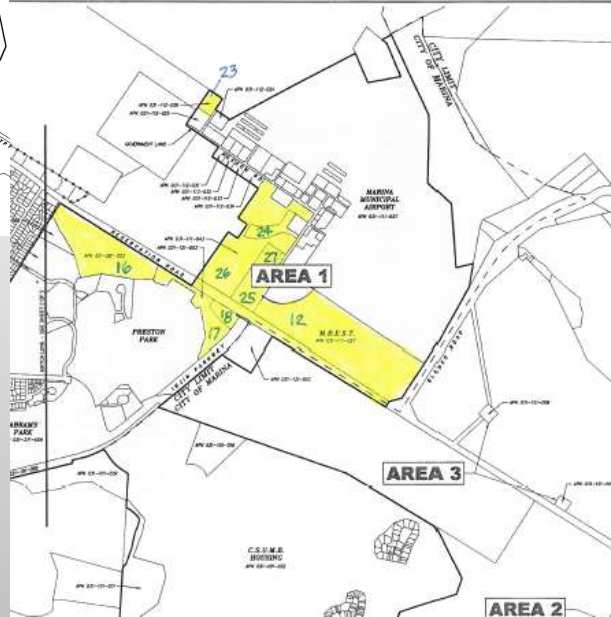
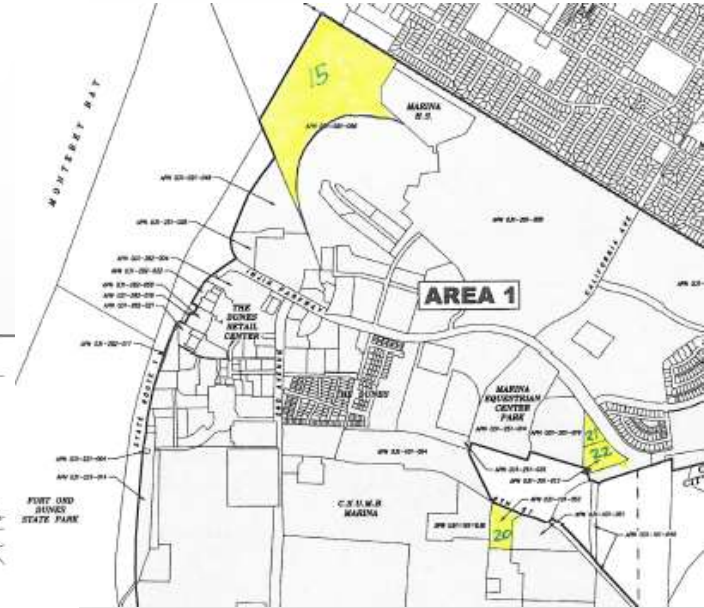
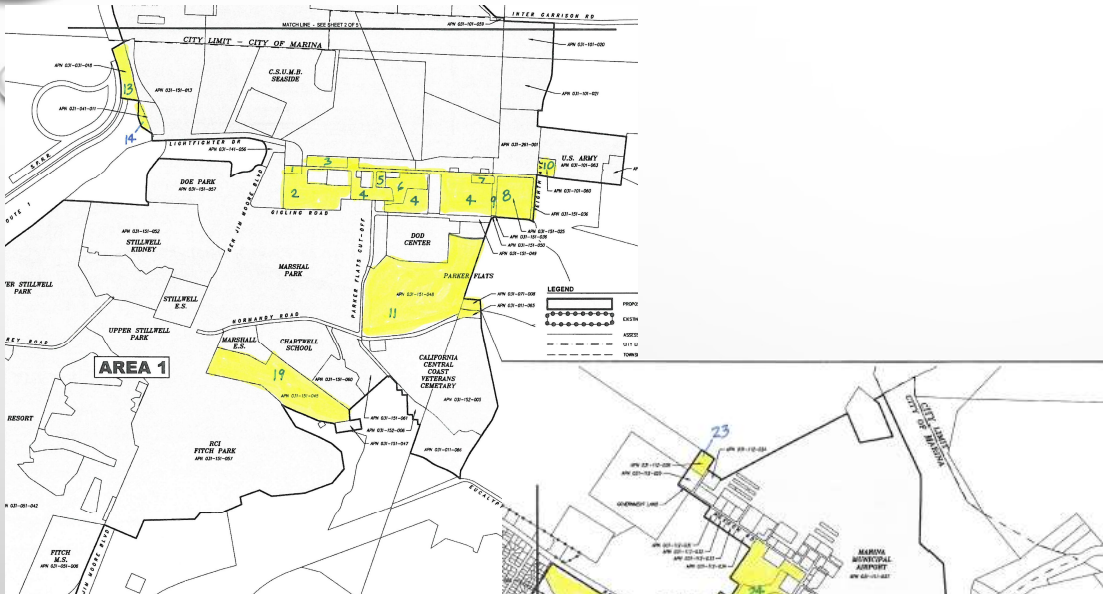


# QUESTIONS

## KEY SETTLEMENT ITEMS

- EXCLUDE PARCELS NOT CURRENTLY ENTITLED (NO LAND USE APPROVALS)
- LANDWATCH/KFOW TO NOT OBJECT TO FUTURE ANNEXATIONS UPON LAND USE APPROVAL

# ANNEXATION MAP (REMOVED PARCELS)



## KEY SETTLEMENT ITEMS

- MCWD TO NOT COMMIT 6600 AFY OF GROUNDWATER SOURCES FOR NEW RESIDENTIAL UNITS BEYOND 6160 IN ACCORDANCE WITH BASE REUSE PLAN (DRMP)
  - DOES NOT LIMIT SUPPLY FROM OTHER SOURCES: ASR, RW, STORMWATER, DESAL, OTHER
  - 6,160 LIMIT MAY BE AMENDED BY FORA
  - SUBJECT TO GSP FOR MONTEREY SUBBASIN AS APPROVED BY DWR TO DETERMINE ACTUAL GROUNDWATER SUSTAINABILITY LEVEL OF BASIN